

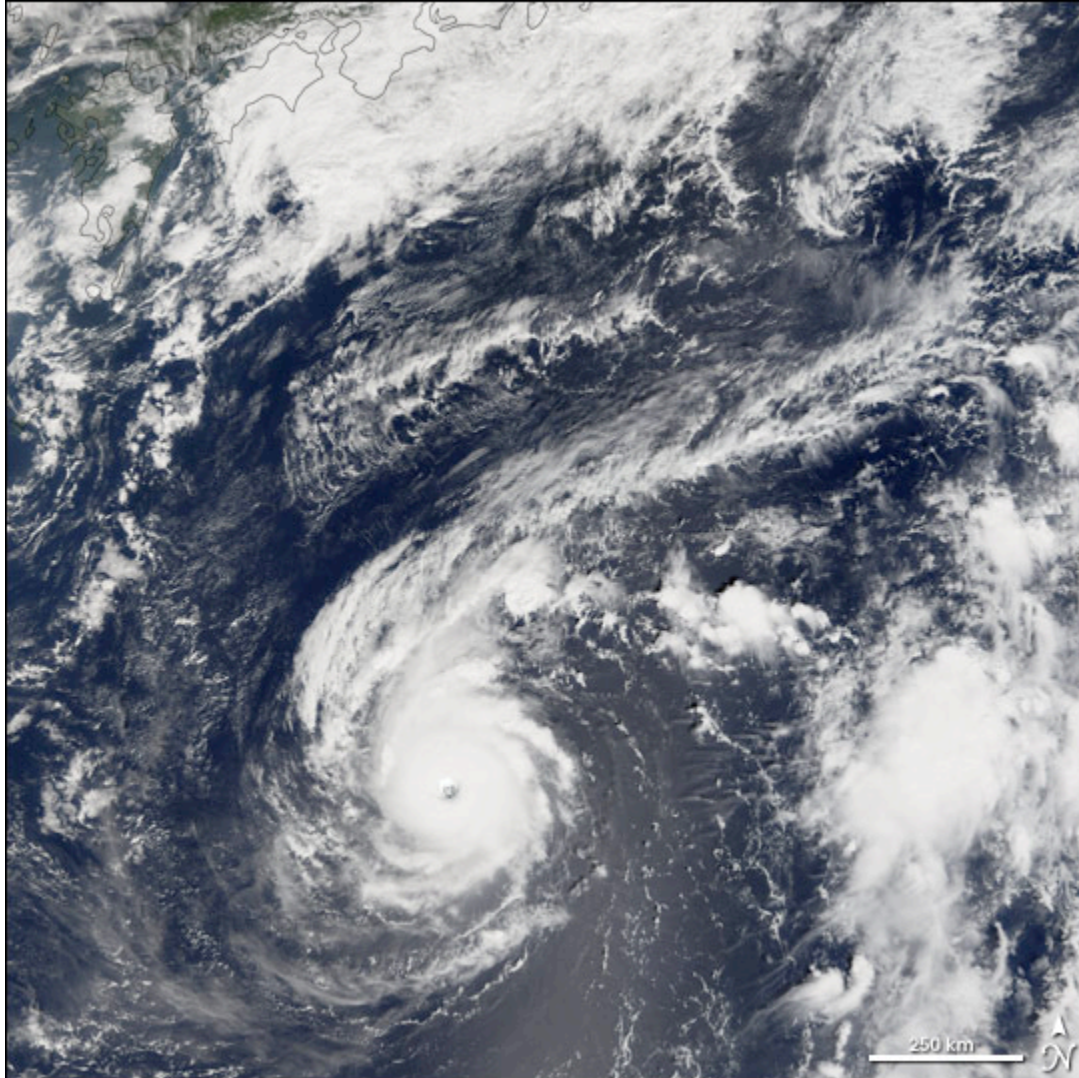
earth observatory



home • data & images • features • news • reference • missions • experiments • search

NATURAL HAZARDS

[Natural Hazards](#) >> [Severe Storms](#) >> Typhoon Longwang



[Click here to view high-resolution version](#) (6.08MB)

Image Acquired: September 28, 2005

Typhoon Longwang

Typhoon Longwang was a small but well organized and powerful storm system when the Moderate Resolution Imaging Spectroradiometer ([MODIS](#)) on NASA's [Terra](#) satellite captured this image at 10:30 a.m. local time, on September 28, 2005. At the time of this MODIS observation, Longwang was 900 kilometers (590 miles) from Okinawa and a comparable distance south of Honshu (The main island in the Japanese chain at the top of this image.). It was travelling roughly westward towards the Chinese coast on a track that would take it through the southern fringe of the Japanese Islands. Typhoon Longwang had sustained winds of 200 kilometers per hour (125 miles per hour) near the storm's center, and it was projected to continue to strengthen slightly in the following days.

NASA image created by Jesse Allen, Earth Observatory, using data courtesy of the [MODIS Rapid Response](#) team.

[Recommend this Image to a Friend](#)

Severe Storms: [Topic Home](#) | [Archive](#) | [Related Links](#)

[Natural Hazards Home](#) | [Section FAQ](#)

[Subscribe to Natural Hazards](#)

[About the Earth Observatory & Natural Hazards](#)

Please send comments or questions to: nh-contact@eodomo.gsfc.nasa.gov

Program Manager: [David Herring](#)

Responsible NASA official: Yoram Kaufman

[NASA/GSFC Security and Privacy Statement](#)

Where in the World



Image Posted

September 28, 2005

Satellite & Sensor

Terra- MODIS

Other Images for this Event

Posted: [Sep 27, 2005](#)

Severe Storms Latest Events

[Typhoon Damrey](#)

[Typhoon Saola](#)

[Hurricane Rita](#)

[Hurricane Philippe](#)

[Hurricane Kenneth](#)